

# Funding stream analysis update and initial findings

---

Prevention and Promotion  
Systems Governing Committee

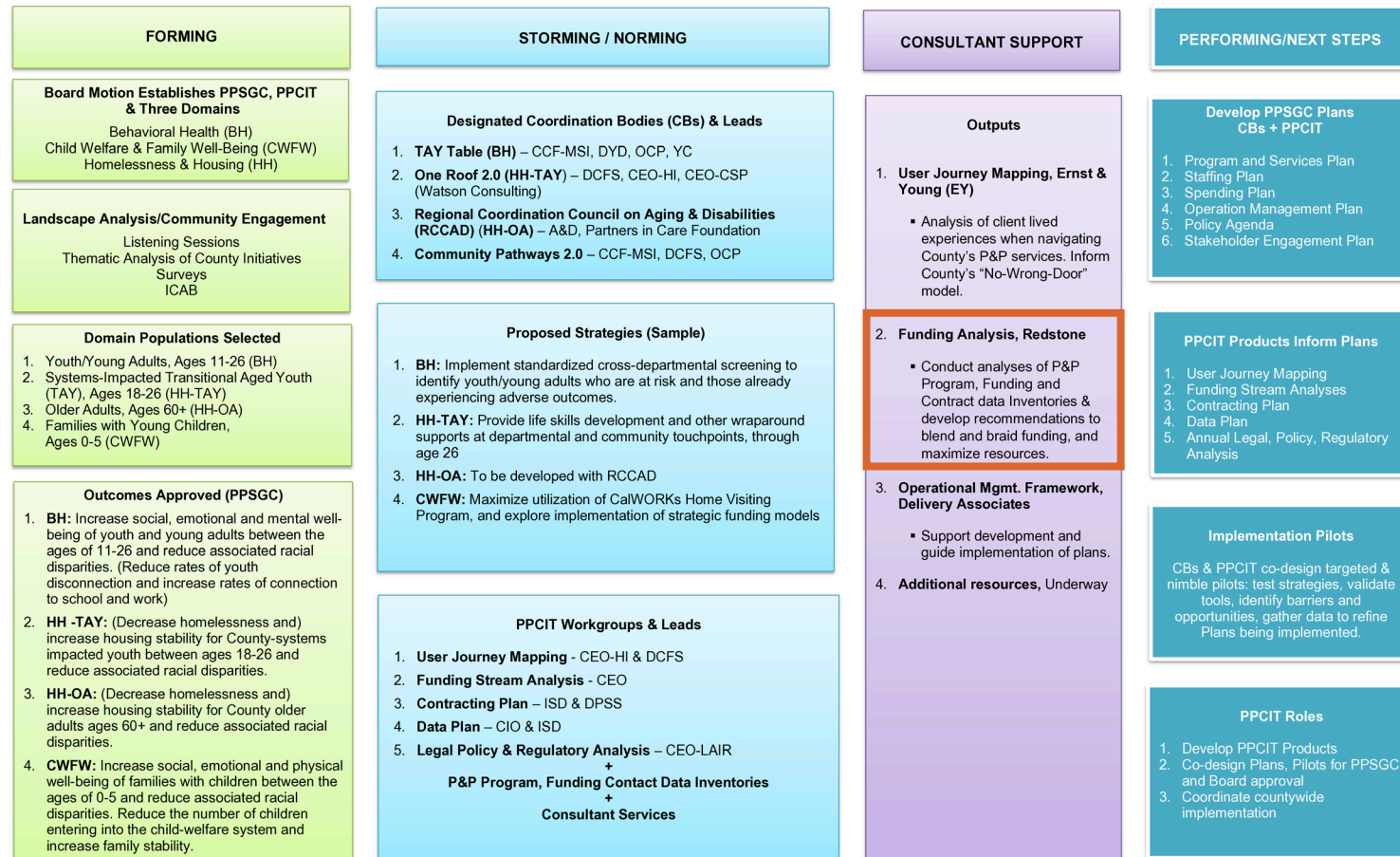
April 16, 2025



# The Funding Stream Analysis is one element of the P&P implementation infrastructure ecosystem

## PPSGC and PPCIT Infrastructure and Eco System

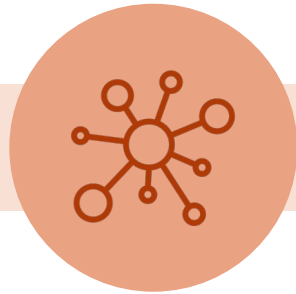
04.11.25



# Funding Stream Analysis goals



**Collect prevention and promotion program and funding data** from aligned to the domain areas and framework



**Validate, synthesize, and supplement data** to inform the PPSGC and PPCIT planning efforts



**Conduct targeted analyses** to identify opportunities to maximize resources to support program and policy priorities

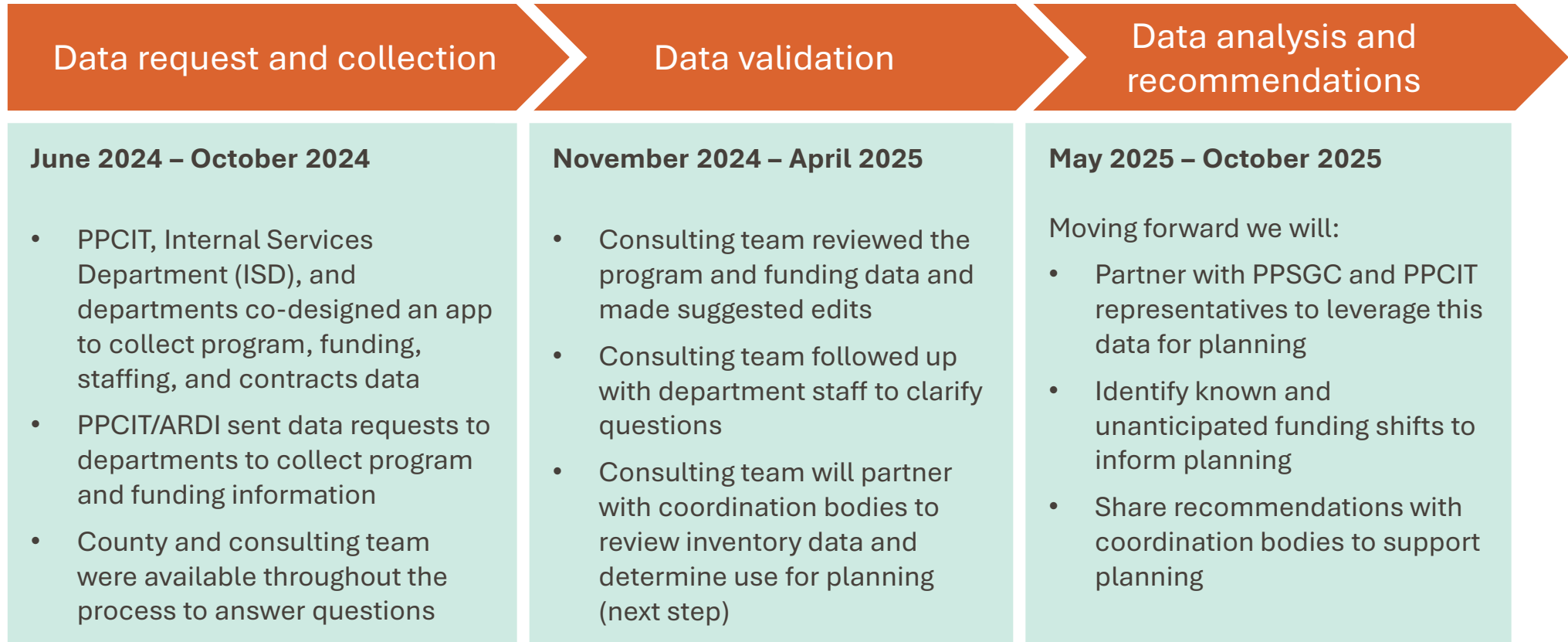
## Topics for today

1. Share an update on the process and approach to date
2. Provide an overview of the data collected in the inventory
3. Discuss opportunities to leverage this data to support coordination bodies and planning

# **Process and approach**

# We are in the middle of the validation and analysis phases

Today



*Today we will share updates on the process to date and discuss opportunities in the coming analysis work*



## A few norms have guided our process



Respect the hard work of each department or agency to allocate, spend, and track budgets for maximum impact



Approach questions with curiosity and openness to many possible answers



Engage as a collaborative partner, sharing transparently and iterating on results

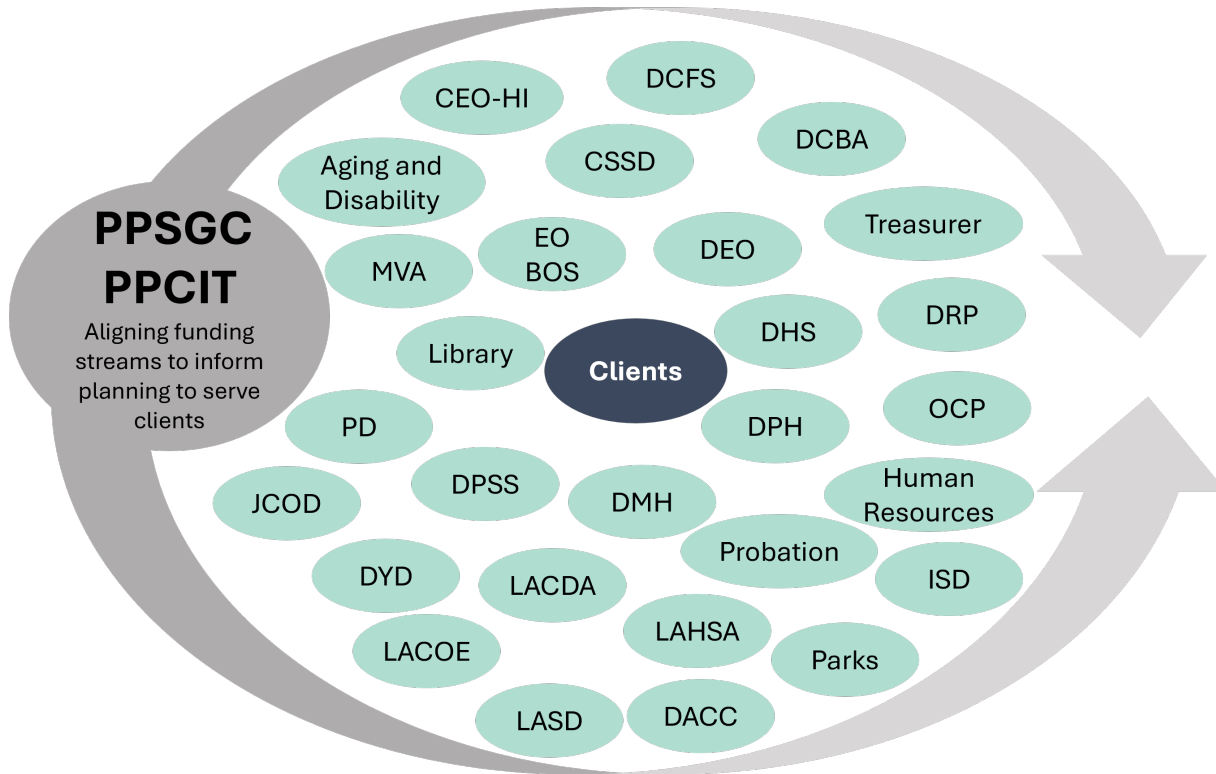


Share the data we have, knowing that it is imperfect and will improve through iteration



Center the client and the need for equity in delivering services

## 28 departments participated in the data collection process



- PPCIT/ARDI sent the program and funding inventory to 28 departments and county agencies (including non-PPCIT member departments) to collect program, funding, contract, and staffing data
- 22 county departments and agencies responded to the request with program and funding data and six departments responded they did not operate programs relevant to the PPSGC framework

# **Inventory data overview**






## Before we dive in, there are a few notes on the inventory data

- **This self-reported data is looking in the rear-view mirror.** This data can help coordination bodies understand where programs exist and what funding programs have relied on in the past to inform future planning
- **Departments shared overall budget information and many of these programs include prevention as only a portion of its total services or activities.** We will work to better understand what portion of budgets are for prevention and focal populations
- **County staff expressed differing opinions and understanding of how their work fit into the prevention definitions** which was seen in how they tagged programs to levels of prevention, population-level indicators, and social determinants of health



# Departments shared program and funding data aligned to the PPSGC framework

Domain	 <b>Child Welfare &amp; Family Well-Being</b>	 <b>Behavioral Health</b>	 <b>Housing &amp; Homelessness</b>	
Population	Families with Young Children, Ages 0-5	Youth and Young Adults, Ages 11-26	County systems impacted TAY, Ages 18-26	Older Adults, Ages 60+
Population Level Indicators / Metrics	<ul style="list-style-type: none"> <li>• Percentage of families with living wage incomes (&gt;300% FPL)</li> <li>• Rates of pre-term births</li> <li>• Rates of domestic violence/intimate partner violence</li> <li>• Rates of allegations of maltreatment</li> <li>• Rates of substantiated maltreatment</li> <li>• Rates of associated racial disparities</li> </ul>	<ul style="list-style-type: none"> <li>• Suspension rates for youth ages 11-19</li> <li>• Rates of disconnection among youth and young adults ages 16-26</li> <li>• Rates of associated racial disparities</li> </ul>	<ul style="list-style-type: none"> <li>• Rates of housing stability for County systems-impacted TAY, ages 18-26</li> <li>• Rates of associated racial disparities</li> </ul>	<ul style="list-style-type: none"> <li>• Rates of housing burden for households led by adults over 60+</li> <li>• Rates of associated racial disparities</li> </ul>

## Program data

- Domain
- Level of prevention
- Population served
- Population-level indicator addressed
- Social Determinant of Health addressed

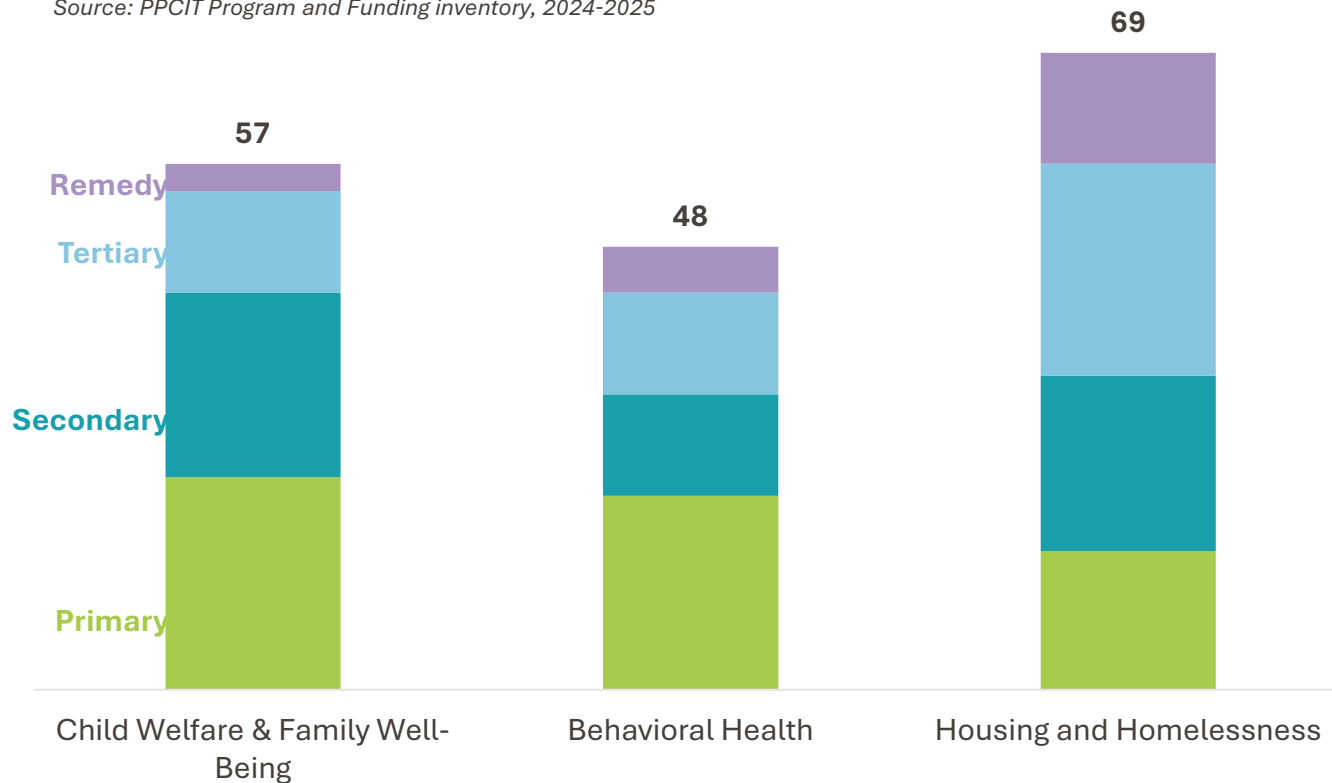
## Funding data

- FY 23-24 budget
- FY 23-24 expenditure
- FY 24-25 budget
- Funds received from other departments
- Funds sent to other departments

# Submitted programs were spread across PPSGC domains

**Figure 1** Departments shared data on 170+ prevention programs across domains and prevention levels

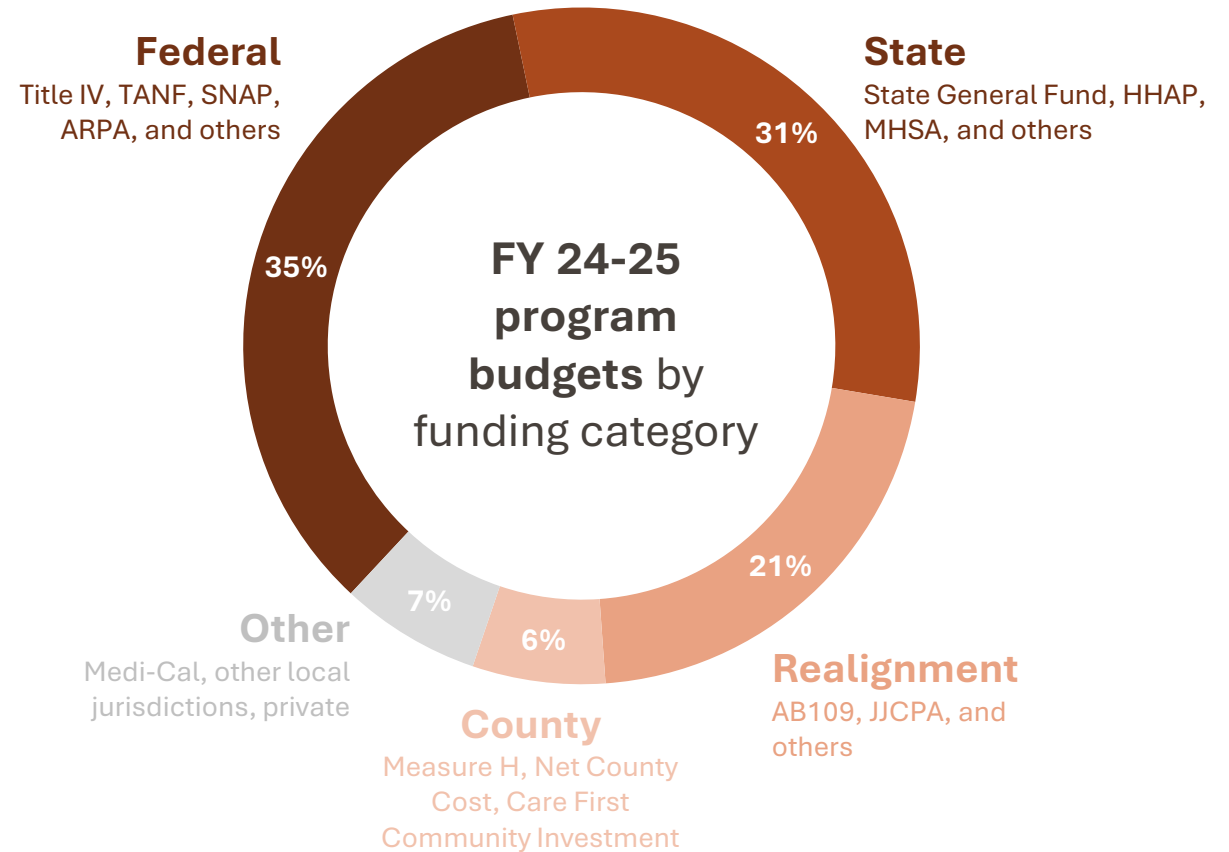
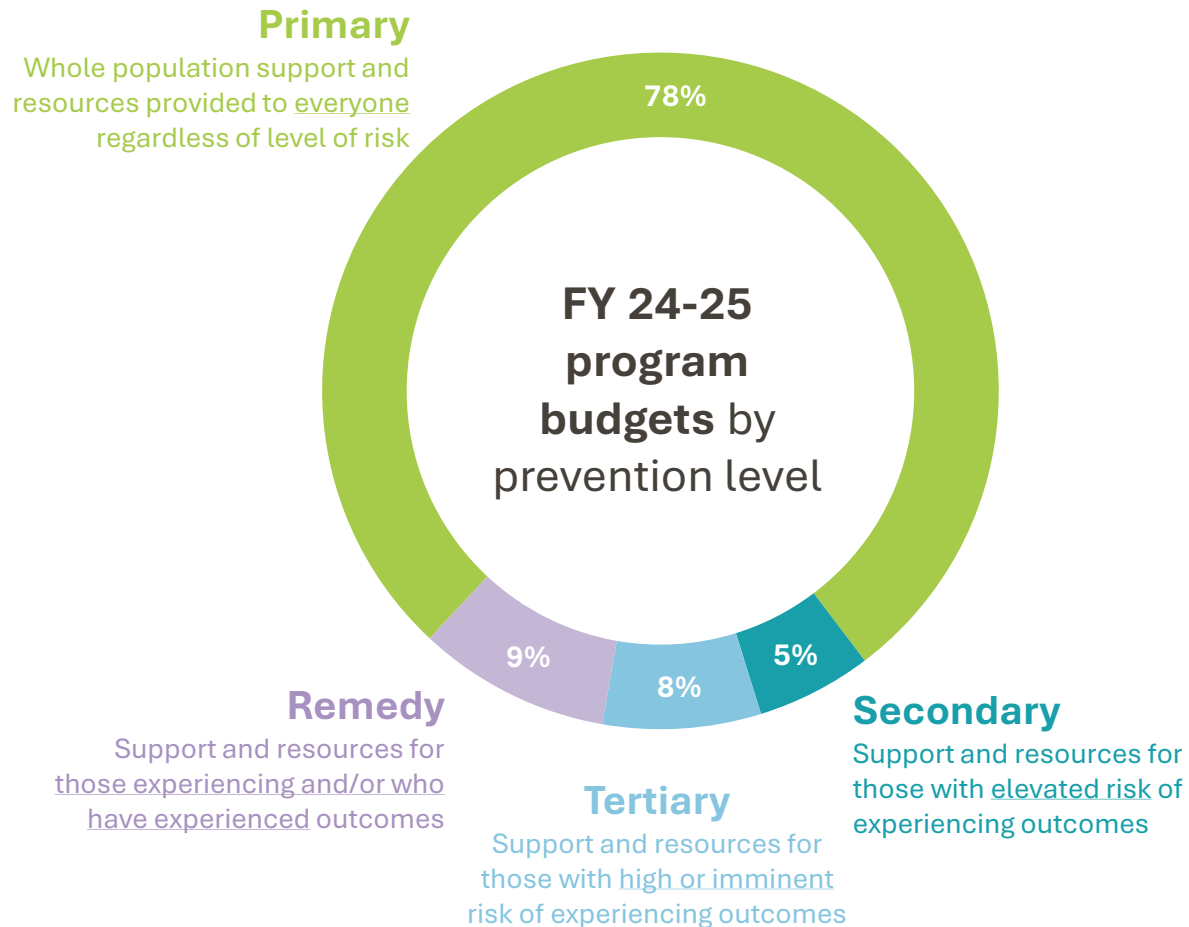
Source: PPCIT Program and Funding inventory, 2024-2025



- Departments reported a various programs with the most tagged to the housing and homelessness domain
- Most programs were tagged to the primary prevention domain followed by secondary and tertiary prevention
- Department of Mental Health, Department of Public Health, Department of Public Social Services, and Department of Children and Family Services reported the most programs across domains

Note: There were five basic safety net programs that provide supports across domains not captured in the chart above

# The funding in the inventory was mostly tagged to primary prevention and came from federal and state sources



**Opportunities to  
leverage this data**



## OPPORTUNITIES TO LEVERAGE THIS DATA

# Our next step is to work with coordinating bodies to identify opportunities to inform program and spending plans

The types of questions we can help answer include:

- To what extent are the current funding sources for priority existing programs likely to be sustainable? Where are there one-time funding sources that are going away or state/federal sources that are at risk?
- To what extent does recent data show us there is opportunity to further maximize funding in specific programs across domain areas?
- What opportunities are there to use existing money differently to achieve programmatic priorities? Are other jurisdictions using funding sources differently in ways that could inform the work of the coordination bodies?



## Illustrative example: We can partner with coordination bodies to understand priorities and make recommendations

### PPSGC PPCIT strategies | Child Welfare & Family Well-Being

- 1) Institutionalize and support Community Pathway 2.0 as the County's CB and umbrella entity
- 2) Implement the Community Pathway component of the state-mandated LA County Comprehensive Prevention Plan
- 3) Facilitate access to economic and concrete supports including implementing screenings, developing pathways for linkages to food resources, and advocating for funding of economic and concrete supports
- 4) Maximize utilization of CalWORKs Home Visiting Program, and explore implementation of strategic funding models
- 5) Implement secondary prevention interventions to disrupt abuse cycles among young people who have been exposed to DV/IPV
- 6) Pilot the Mandated Supporting Initiative to reform mandated reporting, which addresses racial disproportionality in the child welfare system and promotes bolstering of protective factors to prevent abuse/neglect and promote family well-being

### 1) Identify relevant programs from the program and funding inventory

DPH, DCFS, DPSS, DMH, and DHS shared information in the inventory about prevention programs to disrupt abuse cycles for those exposed to DV / IPV

### 2) Assess underlying funding sources and budget outlook

We can share what funding sources those programs relied on in their FY 24-25 budgets, breakdowns by funding category, and an outlook on whether those sources are likely to continue and if there is opportunity to braid funds

### 3) Provide recommendations and iterate with coordination bodies

In partnership with coordination bodies and department staff, we can recommend funding sources and sustainability pathways for newly piloted approaches (e.g., creatively use TANF and MHSA/BHSA funds)



**Next steps**

# Next Steps and Timeline

Activity	Timeline/Status
Confirm Services, Subpopulations, and Personas for User Journey Mapping (UJM) Process & Plan Development	April 2 <sup>nd</sup>
Mobilize P&P Infrastructure to Prepare for UJM	April 2 <sup>nd</sup> - April 30 <sup>th</sup>
TAY Table Kickoff Convening	April 30 <sup>th</sup>
Launch UJM Process	April 30 <sup>th</sup>
Conduct P&P Funding Analysis (FA) to support Plans	April-May
PPSGC Meeting and elections: <i>Nominations</i> for Chair and Vice-Chair	May 21 <sup>st</sup>
Domain-based Plan Development and Review	Begins following UJM & FA processes
PPSGC Meeting and elections: <i>Election</i> of Chair and Vice-Chair	June 18 <sup>th</sup>
Continue working on PPSGC-related Reports:	
<a href="#">Enhancing the Continuum of Care for Former Foster Youth and Those Exiting DCFS Care</a> Recommendations to Inform Strategies for Homelessness Domain-TAY	<ul style="list-style-type: none"> <li>• PPSGC approval: June 18<sup>th</sup> meeting.</li> <li>• BOS submission: July 7<sup>th</sup>. Every six months after.</li> </ul>
<a href="#">Building Los Angeles County's Prevention Infrastructure Motion</a> Report Should Include Final PPSGC Strategies in Each Domain.	<ul style="list-style-type: none"> <li>• PPSGC approval: July 16<sup>th</sup> meeting</li> <li>• BOS submitted: July 25<sup>th</sup>. Every six months after.</li> </ul>
Complete selection/hiring process for the PPSGC ED	Underway



## Next steps

- Partner with coordination bodies and departments as needed to review and refine program tagging across the PPSGC and PPSGC framework
- Meet with PPSGC, PPCIT, and coordination bodies leadership to discuss opportunities to leverage this data to inform plans
- Conduct targeted analyses and offer recommendations to coordination bodies to inform program and policy plans

