



**Chief
Executive
Office.**

COUNTY OF LOS ANGELES

Kenneth Hahn Hall of Administration
500 West Temple Street, Room 713, Los Angeles, CA 90012
(213) 974-1101 ceo.lacounty.gov

CHIEF EXECUTIVE OFFICER

Fesia A. Davenport

July 3, 2025

To: Supervisor Kathryn Barger, Chair
Supervisor Hilda L. Solis
Supervisor Holly J. Mitchell
Supervisor Lindsey P. Horvath
Supervisor Janice Hahn

From: Fesia A. Davenport *Jeremy Gray for*
Chief Executive Officer Jeremy Gray for (Jul 3, 2025 15:58 PDT)

**ESTABLISHING AN ANTIRACIST LOS ANGELES COUNTY POLICY AGENDA
(ITEM NO. 3, AGENDA OF JULY 21, 2020)**

On July 21, 2020, the Board of Supervisors (Board) recognized, affirmed, and declared that "racism is a matter of public health in Los Angeles County (County)." Additionally, the Board determined that "racism against Black people has reached crisis proportions that result in large disparities in family stability, health and mental wellness, education, employment, economic development, public safety, criminal justice, and housing." As a result, it directed the Chief Executive Officer to establish an eighth Board-directed priority to address the elimination of racism and bias in the County, which included the development of an annual report (Report) that:

- Outlines and provides regular updates on the State of Black Los Angeles County, with a focus on outcomes for African Americans in the areas of physical and mental health, education, employment, law enforcement, justice, housing, and homelessness, including updates on the implementation of recommendations made by the Ad Hoc Committee on Black People Experiencing Homelessness.

The Board required that the Report include an annual assessment of outcomes and progress with defined benchmarks and objectives, and that the Report findings be presented to the Board each year during a Board meeting in June.



Each Supervisor
July 3, 2025
Page 2

For the past three years, Chief Executive Office–Anti-Racism, Diversity, and Inclusion (CEO-ARDI) and its research partners have worked diligently to create the inaugural and second annual report on the State of Black Los Angeles County. However, due to the production time needed for the development of the Report and other factors, a biennial schedule was adopted to enable CEO-ARDI and, by extension, the County, to implement the recommendations identified by the community in the Report. This year's report progress update provides a trends analysis, enabling the Board to identify whether improvements in life outcomes are occurring for Black Angelenos. Attachment I provides an overview of the trends analysis, and Attachment II is the presentation deck with progress updates.

Should you have any questions concerning this matter, please contact me or D'Artagnan Scorza, Ph.D., Executive Director of Racial Equity, at (213) 974-1761 or dscorza@ceo.lacounty.gov.

FAD:JMN:JFO
DS:TW:es

Attachments

c: Executive Office, Board of Supervisors
County Counsel
Public Health

State of Black Los Angeles County Progress Report

In 2023, CEO-ARDI released the inaugural report on the State of Black Los Angeles County. The report served as one of our efforts to meet the Board's directives outlined in the original July 21, 2020, motion declaring racism a public health concern and establishing ARDI. In the second installment of the report, ARDI moved beyond sharing baseline data to focusing on the challenges that shape Black residents' quality of life in Los Angeles County and the availability of County services aimed at addressing these challenges. In addition, ARDI explored how the new and evolving political context is shaping Black people's experiences as well as the lingering effects of COVID-19 on Black communities.

In June 2024, ARDI released the 2023-2025 State of Black Los Angeles County report. The online, interactive report included a series of maps, bar charts, and in-depth analyses of the drivers and root causes of racial disparities in LA County between Black residents and their non-Black counterparts. In addition to updated bar charts and new focus areas, this edition of the report addressed themes of Black dignity and belonging, Black quality of life across the life course, and the County's commitment to equity in an era of regression. This edition also expanded the research scope by adding three new domains—moving from six to nine areas of focus—and increased the number of indicators from 36 to over 120. The report's new domains focused on the areas of child and youth development, the built environment, and civic engagement.

Since the release of the second report, ARDI has worked to assess the County's progress on implementing the report's recommendations. In this brief progress update, ARDI provides the results of that assessment which includes an analysis of trends, efforts to implement the recommendations and a summary of a new chapter on Black aging and caregiving in response to the May 13, 2025 "Proclaiming the 3rd Saturday in May as Black Elders Appreciation Day" motion.

Analysis of Trends Across Indicators for Black Angelenos

ARDI performed an analysis of trends comparing Black residents' outcomes between the inaugural and second reports. The comparison enables us to identify how Black people are faring in the County over time. For example:

- Life Expectancy
 - Decreased from 74.8 years (2018-2020) to 73.2 Years (2019-2021), indicating that Black people are living slightly shorter lives than before the pandemic.
- Usual Source of Health Care
 - The percentage of Black residents without a usual source of care increased from 11.6% (2020) to 17.2% (2022), indicating that fewer Black people than before have access to a regular primary care provider.
- Mental Health
 - The percentage of Black residents reporting that they are currently depressed decreased from 15.3% (2018) to 11.4% (2023), indicating that fewer Black residents are reporting that they are depressed.
- Mean Home Values
 - Increased from \$728.6k (2021) to \$831.6k (2022), suggesting that Black homes have increased in value.
- Mortgage Acceptance Rates
 - The percentage of Black mortgage applications decreased from 61% (2021) to 51% (2022), resulting in fewer prospective Black homeowners able to secure a home.
- Homelessness
 - The number of Black people experiencing homelessness increased from 19,522 (30% of the homeless population) in 2022 to 22,606 (32% of the homeless populations) in 2023, indicating that more Black people in the County are falling into homelessness.
- Median Household Income
 - Increased from \$51k (2016-2020) to \$59k (2018-2022), suggesting an increase in how much income Black householders brought home than they did before.
- Residents Below 200% of the poverty line
 - Increased from 29.0% (2021) to 36.2% (2022), resulting in more Black people experiencing poverty.

- Chronic School Absenteeism
 - Increased from 24.3% (2018-2019) to 37.6% (2022-2023) among Black students, resulting in more Black students losing in-school instruction time.
- High School Graduation Rates
 - Increased from 75.7% (2018-2019) to 82.1% (2022-2023), suggesting improved high school completion rates for Black students.
- Residents' Perception of Neighborhood Safety
 - Decreased from 82.9% (2018) to 70.1% (2023), suggesting that Black residents feel less safe in their communities.

These outcomes show that while there are some improvements in the areas of home values, median household income and high school graduation, in several areas, it appears that Black outcomes have worsened in the time period between when these data were collected and/or reported. For example, the percentage of Black people living below 200% of the federal poverty line increased by more than seven percentage points between 2021 and 2022. While we cannot account for the impact of the County on the quality of life of Black Angelenos, we can identify where County programs and services might be more important for this population.

To improve access to County programs and services in ways that can address these trends, the online report includes a [map-based inventory](#) of County programs and services for each domain, as well as a County program locator. This Countywide programs and service locator is a valuable tool, in that allows ARDI to readily identify available programs and services for residents experiencing adverse outcomes on any of the focus areas addressed in the report. In addition, the tool can be used by departments to provide its participants concise, but helpful information about the programs and services available in the County.

Moving Towards Implementation

The report also included a set of recommendations that were developed using input gathered from community members and the experts on the Academic Research Consortium. The recommendations are as follows:

1. Adopt a Countywide Approach to Targeted Universalism - Tailor outreach efforts and service delivery practices to the specific cultural contexts, beliefs, values, practices, and needs of various communities.
2. Repair Harm and Expand Access - Create accountability for past and present harms inflicted on communities and address the harms perpetuated by unfair policies and practices.
3. Provide Mobile Services - Provide mobile health, counseling, educational, and career services to increase access to communities with difficulty traveling due to disability, health and safety concerns, or lack of transportation.

ARDI identified new or existing County-led efforts that aligned to help achieve the objectives of the recommendations.

For the first recommendation, "*Tailor outreach efforts and service delivery practices to the specific cultural contexts, beliefs, values, practices, and needs of various communities*)," ARDI identified the following efforts occurring throughout the County:

- Homeless Initiative: Since 2023, ARDI has worked with the Homeless Initiative (HI) to embed equity in its strategies and operations. This includes using a Targeted Universalism approach to addressing homelessness in the County, which was formally adopted by HI in 2024.
- Measure A: In 2025, the Equity Subcommittee of the Leadership Table for Regional Homeless Alignment (LTRHA) proposed a Targeted Universalism approach to identify target populations—including Black people experiencing homelessness in Los Angeles County—and develop equity metrics. The equity metrics were adopted by the Leadership Table and the Executive Committee for Regional Homeless Alignment (ECRHA) in the spring of 2025.
- Equity Infrastructure Framework: ARDI is currently collaborating with the Department of Public Works who has connected with community partnerships and is increasing its engagement to promote visibility and public comment to the Equity in Infrastructure Framework. This will inform the strategies that Public Works will be moving forward to advance equity in infrastructure investments.

For the second recommendation, "*Repair Harm and Expand Access - Create*

accountability for past and present harms inflicted on Black communities and address the harms perpetuated by unfair policies and practices”, ARDI noted the following progress:

- **Reparations:** ARDI is currently exploring ways to address inequities, disparities and disproportionality throughout the County.
- **Racial Equity Strategic Plan:** ARDI has moved from the planning to the implementation phase of the 10-year Countywide Racial Equity Strategic Plan, including partnering with all County departments in developing departmental equity action plans.
- **Equity in Mobility:** ARDI is collaborating with community-based organizations on a community meeting series designed to create spaces for dialogue, strengthen partnerships, and elevate community voices committed to advancing mobility justice. The goal is to explore solutions for enabling all residents to move freely and safely, accessing essential services, goods, information, and places without facing barriers due to race, ability, or other factors.

For the final recommendation, *“Provide Mobile Services - Provide mobile health, counseling, educational, and career services to increase access to communities with difficulty traveling due to disability, health and safety concerns, or lack of transportation,”* ARDI identified the following programs and services provided by various County departments:

- **Mobile Clinic Program (DHS):** Through this program, DHS provides comprehensive medical care and behavioral health care to unsheltered persons experiencing homelessness, which includes outreach to the most marginalized in encampments, parks, drop-in centers, select interim housing sites. It serves residents in all SPAs and includes primary care, women's health care, urgent care, case management, and addiction treatment, as well benefit enrollment. From July 1, 2024, to May 17, 2025, Mobile Clinic has provided services for 539 Black/African American individuals in the County.
- **Homeless Outreach & Mobile Engagement (HOME) Program (DMH):** Through this program, field-based outreach, engagement, support, and treatment is provided to adults 18 and over with severe and persistent mental illness experiencing unsheltered homelessness. Services are provided by addressing basic needs; conducting clinical assessments; providing street psychiatry;

and providing linkage to appropriate services (including mental health services substance abuse treatment and shelter).

- Home-Delivered Meals (Aging & Disabilities): This program delivers nutritious meals to adults 60 or older who are frail, homebound, or isolated; spouses of older adults in the program; and individuals with disabilities who live with an older adult in the program. Most meal programs deliver a hot meal five days a week.

While all these programs and efforts are available to all Angelenos regardless of the race, gender or any other characteristic, these activities demonstrate the County's commitment to eliminating discrimination against Black residents' and improving outcomes at both the individual and structural levels, particularly as they pertain to physical and behavioral health, elder care, homelessness, food security, mobility, and more. They also reflect the County's commitment to reduce racial disparities across the life course.

Over the next ten years, ARDI will track residents' outcomes alongside the implementation of new programs and the improvement of existing programs.

New Report Chapter: Black Aging and Caregiving

On May 13, 2025, the Board adopted a [motion](#) proclaiming the 3rd Saturday in May Black Elders Appreciation Day. The motion also directed ARDI to add a chapter to the report highlighting the unique needs and outcomes of Black elders. This new chapter, titled "Black Aging and Caregiving," examines outcomes for Black adults over 50 years old, including rates of receiving caregiving, providing caregiving, poverty, homelessness, disability, and more. Based on an initial review, ARDI identified a few select indicators which show the following:

Homelessness

- Black people comprise the largest percentage of people 55 years or older experiencing homelessness in the County (37%).

Disabilities

- Black residents in the County make up the second largest group of people over 65 with a disability (39.6%)

Source of Care

- Black residents comprise the largest percentage (27.2%) of individuals in the County who provided care or assistance to an adult who is aging or has a long-term illness or disability in the past month.

Multigenerational Support

- Black children in the County made up the second largest group of grandchildren (26.9%) that reside with a grandparent without a parent present.

This new chapter aligns with the report's focus on assessing Black residents' outcomes across the life course. It also enables the County to highlight its inventory of programs and services aimed at addressing the needs of the County's older population. ARDI will continue to build out this chapter in response to the Board's motion and provide an update on the completion of the chapter at a later date.

A Call for Unity Across Communities

This report update arrives amid sweeping national shifts—legal, economic, and social—that are destabilizing communities across Los Angeles County, especially those already facing systemic marginalization. The past six months have underscored the urgency of solidarity across racial, ethnic, gender, and geographic lines. Communities including Black, Latino, Asian, immigrant, LGBTQIA+, older adults, and residents of rural regions face heightened vulnerabilities—not just due to economic stress and limited access to services, but because of targeted policy threats that erode dignity, safety, and belonging.

For example, Black immigrant communities—often overlooked in immigration discourse—are among some of the most impacted. Los Angeles County is home to the largest Black immigrant population in California. While Black immigrants represent just 5% of the undocumented population, they account for 20% of those facing deportation, a consequence of anti-Black racism that extends into immigration enforcement and detention systems. These same forces also endanger Latinx, trans individuals, older adults, low-income residents, and those reliant on federally funded health and safety-net programs.¹

These realities can inform how we design County programs. The State of Black Los

¹ Black Alliance for Just Immigration. (2025, May). BAJI First 100 Days 2025. Accessed from: <https://baji.org/wp-content/uploads/2025/05/BAJI-First-100-Days-2025.pdf>

Angeles County report is not just an accounting of disparities; it is a representation of how data can be used to support cross-group action and shared protection.

Next Steps: Strategic Use of Data with Equity Outcomes

To advance accountability and improve alignment between the use of report and community outcomes, ARDI is developing a data-driven framework that links departmental programs to measurable impacts. This includes assessing whether services are meeting the scale of need, which populations are being served, and how programs contribute to addressing disparities. A forthcoming data and mapping tool—modeled after the Equity Explorer—will support departments in tracking metrics, informing budget decisions, and aligning efforts with the County’s Racial Equity Strategic Plan. Supported by Census Alignment initiatives and enhanced administrative data coordination through the CIO’s office, this tool will allow for disaggregation of data, categorization by populations served, and improved scorecard tracking of key outcomes. By doing so, the County can ensure its dollars are being spent effectively and transparently, with a clear “north star” guiding department toward reducing disparities and achieving equitable results.

Given the extensive time and resources needed to develop, design, and publish this report, the report will be produced on a biennial basis. The next report, which will cover 2025-2027, will be released in June 2026.

Year 2 State of Black Los Angeles County Report

Prepared for the Board of Supervisors
Board Update

July 2025

Fesia Davenport

Chief Executive Officer

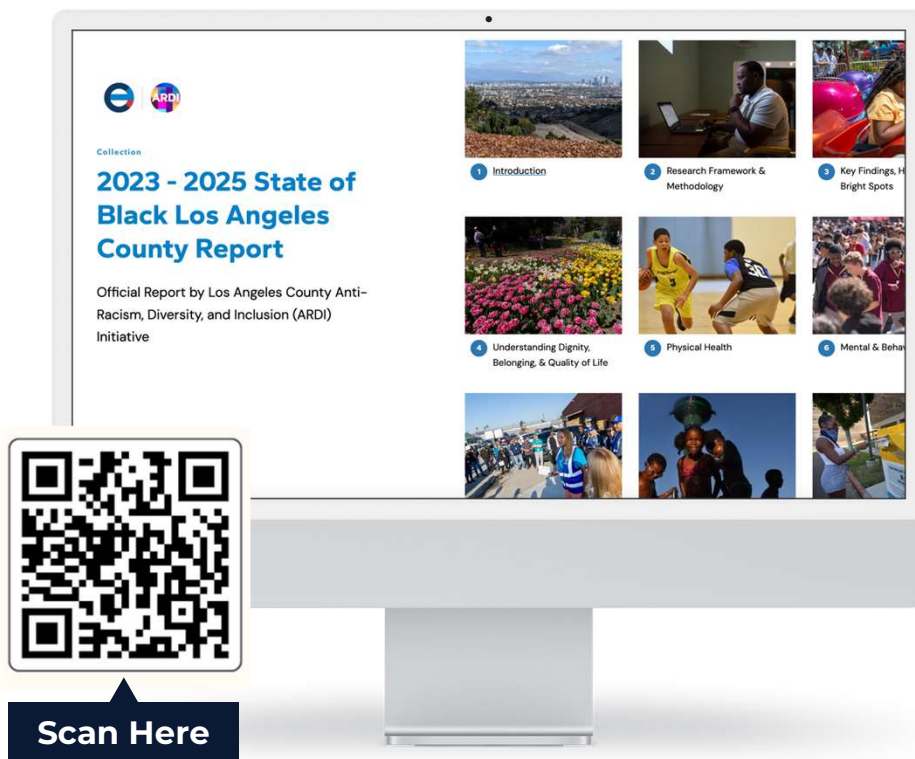
D'Artagnan Scorza, Ph.D.

Executive Director



County of Los Angeles
**Anti-Racism,
Diversity,
& Inclusion**

CREATING AN LA COUNTY
WHERE WE ALL THRIVE



Report Overview

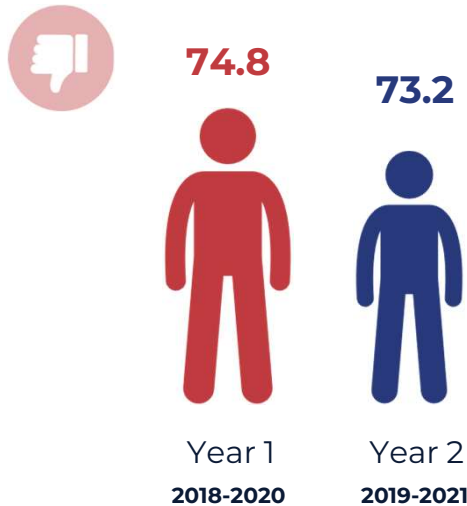
The 2023-2025 State of Black Los Angeles County report is an online, interactive report that includes several in-depth chapters with extensive research and data on how Black people in the County are faring across multiple domains.

The report also includes qualitative data on the lived experience of Black Angelenos collected via interviews, focus groups, and listening sessions.

Other report features include

- video stories
- an inventory of County programs and services
- interactive maps of Black Los Angeles County
- data on over 120 indicators.

Black Life Expectancy

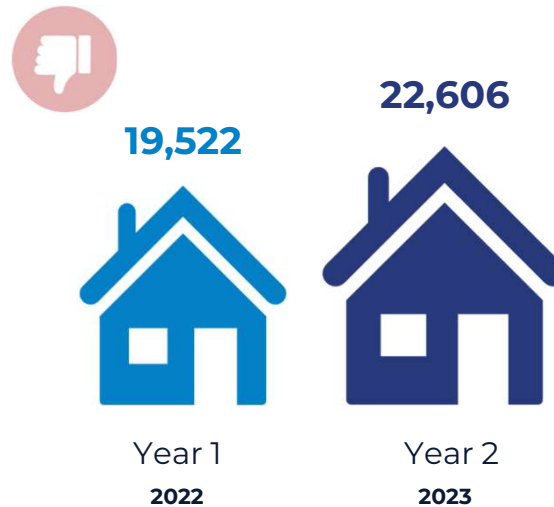


County Programs & Initiatives

- AAIMM Doula Program & Doula Benefit
- Racial Equity Strategic Plan Goal #5



Black People Experiencing Homelessness

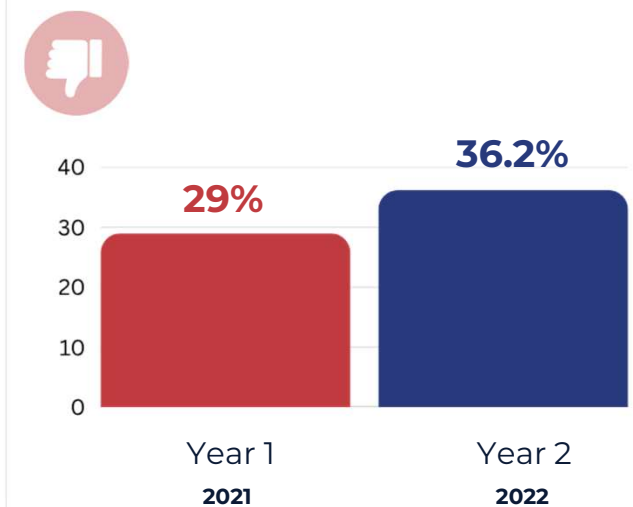


County Programs & Initiatives

- New County Department
- Measure A
- Encampment Resolution
- Housing 4 Health
- Stay Housed LA



Black Poverty Rate (200% of FPL or Less)



County Programs & Initiatives

- Breathe Guaranteed Income Program
- CalWorks
- General Relief
- Racial Equity Strategic Plan Goals #1, #3, #4



Black Graduation Rates



75.7%



Year 1
2018-2019

82.1%



Year 2
2022-2023

County Programs & Initiatives

- Academic Internship Program
- Career Online High School program
- BLOOM
- MBSK
- Community Schools Initiative



Black Median Household Income



\$51,259



Year 1
2020

\$59,000



Year 2
2023

County Programs & Initiatives

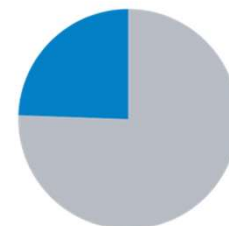
- Economic Opportunity Grant
- Building Trades Apprenticeship
- Racial Equity Strategic Plan Goals #1, #3, #4



Rates of Chronic School Absenteeism Among Black Students



24.3%



Year 1
2021

37.6%



Year 2
2022

County Programs & Initiatives

- Children's Health Outreach Initiatives
- Afterschool Care Programs
- 24-Hour Youth Centers (forthcoming)
- Support for Youth in Schools (forthcoming)
- Student Well-being Centers





New Chapter: Black Aging & Caregiving

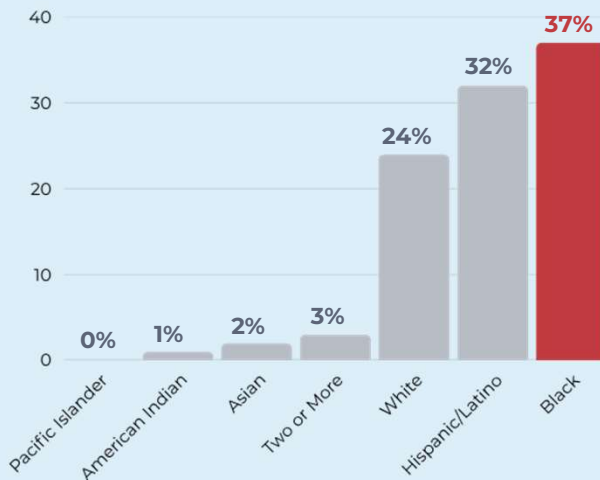
Black Aging & Caregiving

On May 13, 2025, the Board adopted a motion Proclaiming the 3rd Saturday in May “Black Elders Appreciation Day.” The motion directed ARDI to add a new chapter to the State of Black Los Angeles County Report titled “Black Aging and Caregiving.”

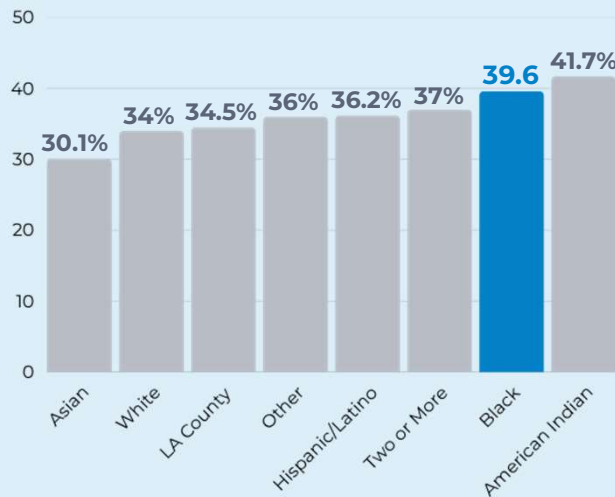
This chapter examines outcomes for Black adults over 50 years old, which include rates of receiving caregiving, providing caregiving, poverty, homelessness, disability, and more.



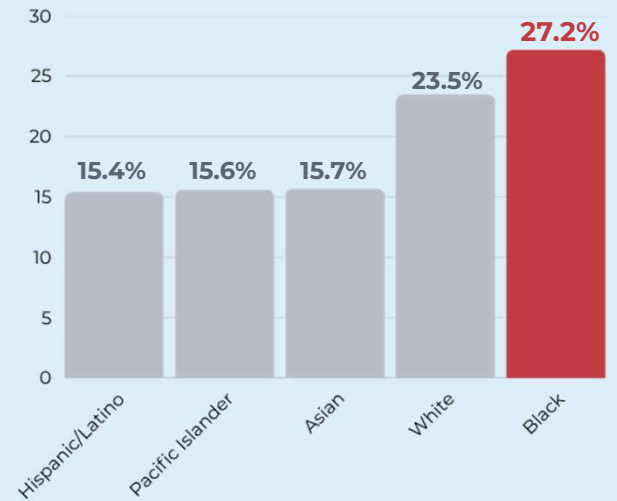
Older Population (55+) Experiencing Homelessness



Percentage of Residents 65+ with a Disability



Percentage of People Who Provided Care or Assistance to an Adult Who Is Aging or Has a Long-Term Illness or Disability in the Past Month



County Programs & Initiatives

- Senior Rental Housing
- Foreclosure Prevention
- Housing Development Loans
- Assisted Living Program
- Utility Assistance

County Programs & Initiatives

- Office of Senior Health
- Geriatric Clinics
- Medi-Cal for Seniors & Persons with Disabilities
- Division of Chronic Disease & Injury Prevention

County Programs & Initiatives

- Family Caregiver Support Program
- Kinship Support Services
- Adoption Promotion & Support Services (APSS)
- Adult Protective Services (APS)
- Public Guardian

The background of the slide features a dark, blue-tinted photograph of a large crowd of people, likely at a conference or event. A large, semi-transparent circular graphic is positioned on the right side of the image. This circle is divided into three distinct colored segments: a light blue segment at the top, a dark blue segment on the left, and a red segment on the right. The overall composition is modern and professional.

Updates on Recommendations

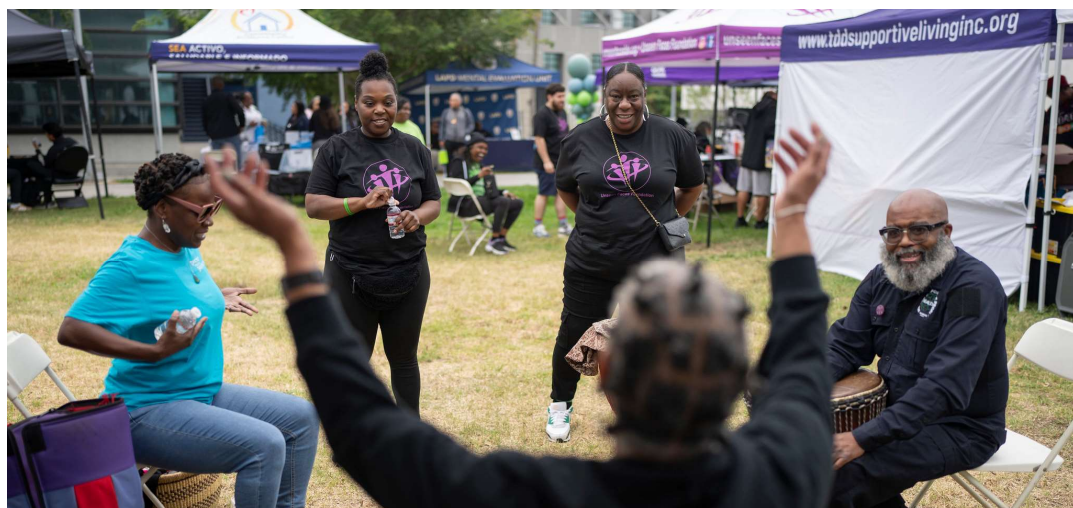


Recommendation 1: **Adopt a Countywide Approach to Targeted Universalism**

Tailor outreach efforts and service delivery practices to the specific cultural contexts, beliefs, values, practices, and needs of various communities.

County Initiatives related to Targeted Universalism:

- Homeless Initiative
- Measure A
- Equity Infrastructure Framework



Recommendation 2:

Repair Harm and Expand Access

Create accountability for past and present harms inflicted on Black communities and address the harms perpetuated by unfair policies and practices.

County Initiatives related to repairing harm and expanding access:

- Reparations
- Racial Equity Strategic Plan
- Equity in Mobility



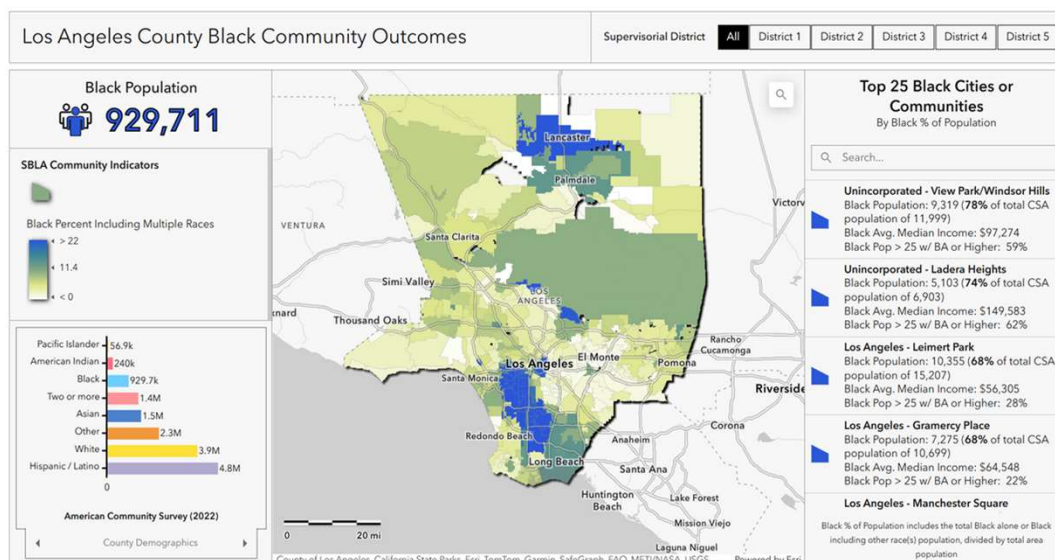
Recommendation 3: **Provide Mobile Services**

Provide mobile health, counseling, educational, and career services to increase access to communities with difficulty traveling due to disability, health and safety concerns, or lack of transportation.

County Initiatives related to Mobile Services:

- Mobile Clinic Program
- Homeless Outreach & Mobile Engagement (HOME) Program
- Home-Delivered Meals

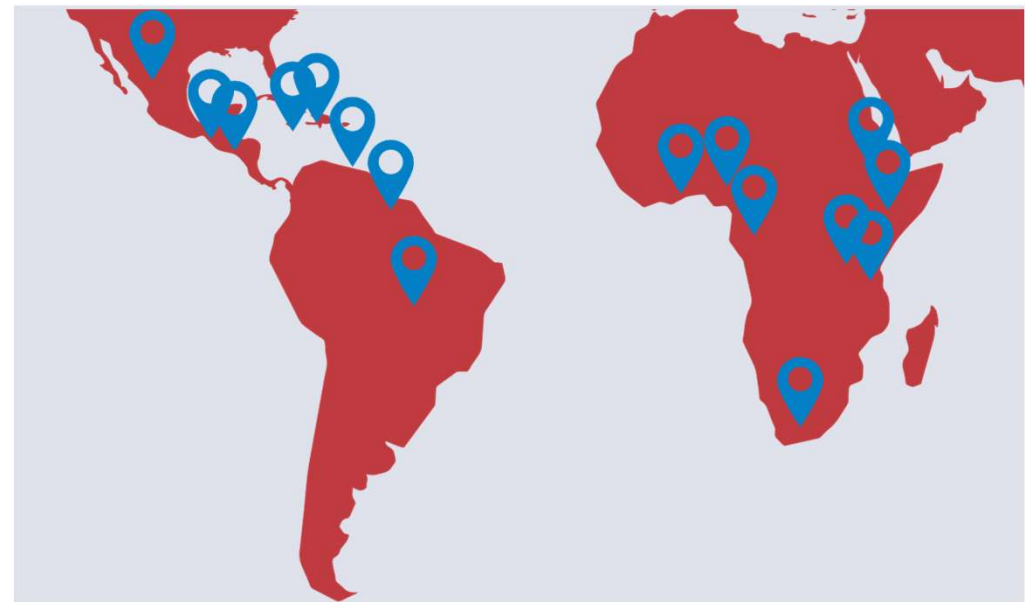
Facilitating Accountability & Tracking Progress



- Ongoing reporting
- Tools, training, and tracking
- Align the County's demographic data categories

Black Immigrants

- LA County has the highest Black immigrant population in the state.
- Foreign-born Black residents make up 8% of the Black population in the County.
- They also comprise about 20% of the County's immigrant community.
- Black immigrants are disproportionately targeted in immigration enforcement and deportation efforts.
- Black immigrants make up only 5% of the undocumented population, yet 20% of those facing removal.



Hailing from countries like Belize, Jamaica, Nigeria, Ghana, Haiti, Ethiopia, Eritrea, and Trinidad, these ethnic groups have experiences that are both distinct from and shared with native-born Black Angelenos.

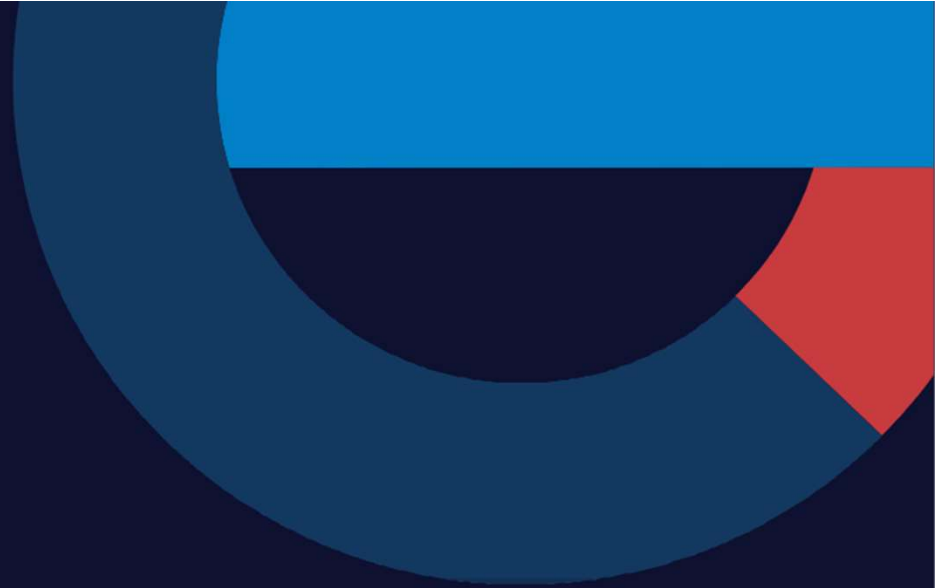
Largest Percentages of Black Immigrants in LA County:

- Nigerians (17%)
- Belizeans (13%)
- Ethiopians (9%)
- Jamaicans (8%)
- Mexicans (6%)



Other Aligned County Efforts

- State of Black Los Angeles County Report (third edition coming 2026)
- State of AANHPI Report (coming 2026)
- State of Latinidad Report (coming 2026)
- Antelope Valley Equity Atlas (coming 2025)
- Preventing Identity-Based Hate and Violence
- AIAN Experiencing Homelessness Dashboard



Thank you.